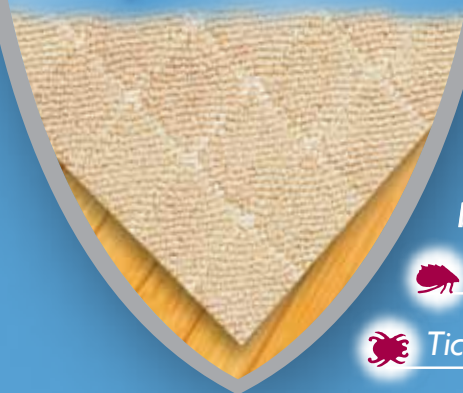


# Hartz®

## ULTRA GUARD *Plus*®

### Flea & Tick Carpet Powder



Kills



Fleas



Ticks

for up to 30 days

Plus Kills



Flea Eggs



Larvae

for up to 1 year

**CLEAN FRESH** Scent  
Eliminates Deep Down Pet Odors

KEEP OUT OF  
REACH OF CHILDREN

**CAUTION**

SEE SIDE PANEL FOR ADDITIONAL  
PRECAUTIONARY STATEMENTS.

Net Contents: 16 oz (454g)

**ACTIVE INGREDIENTS:**

Linalool (CAS #78-70-6) .....	2.500%
Piperonyl Butoxide, Technical* (CAS #51-03-6) .....	0.500%
Pyrethrins (CAS #8003-34-7) .....	0.075%
Nylar** (CAS #95737-68-1) .....	0.020%
<b>OTHER INGREDIENTS</b> .....	96.905%

**TOTAL** .....

100.000%

\* 0.4 (Butylcarbitolyl)(6-propylpiperonyl) ether and 0.1% related compounds

\*\* Nylar is a registered trademark of McLaughlin Gormley King

### Hartz® UltraGuard Plus® Flea & Tick Carpet Powder

For more information, call our flea and tick experts at 1-800-275-1414.

**DIRECTIONS FOR USE:** It is a violation of Federal law to use this product in a manner inconsistent with its labeling.

#### SHAKE WELL BEFORE USING. USE RESTRICTIONS

Do not apply this product in a way that will contact adults, children, or pets either directly or through drift.

Remove or cover exposed food and drinking water before application.

Remove or cover dishes, utensils, food processing equipment and food preparation surfaces or wash them before use.

Do not allow adults, children or pets to enter treated areas until dust has settled.

One 16 ounce canister contains enough powder to treat 1 to 2 rooms (200-400 square feet).

When using this product at the lower rate, allow the powder to remain in place for 24 hours before vacuuming. Apply powder more heavily to areas of flooring or furniture on which the pets spend most of their time. Apply to dry surfaces only. Do not wet powder.

Do not contaminate feed, water, or foodstuffs. Do not apply to food processing surfaces or use in food processing areas where food is exposed. Cover fish aquariums before use. Keep children and pets off treated carpet and upholstered furniture during treatment and while powder is still visible on their surfaces.

**CARPETS:** Shake powder evenly across surface. Brush lightly with broom to force powder deep into carpet where fleas and their larvae exist. Wait at least 60 minutes before lightly vacuuming to remove visible surface powder. For maximum efficacy, delay vacuuming for up to 24 hours.

**UPHOLSTERY:** Remove loose cushions. Sprinkle along creases and into corners. Brush lightly to work powder into folds and creases. Vacuum to remove visible powder on surfaces. Do not use on exposed fabric without first testing on a hidden surface for effects on color (staining) or texture. If powder adheres to a spot, brush out and vacuum that area immediately. When emptying vacuum bag after use, wrap contents or disposable bag in several layers of newspaper and discard in trash. Treat pets with a registered flea and tick control product prior to re-entry.

#### PRECAUTIONARY STATEMENTS HAZARDS TO HUMANS AND DOMESTIC ANIMALS

**CAUTION:** Causes moderate eye irritation. Avoid contact with eyes or clothing. Wash thoroughly with soap and water after handling and before eating or smoking.

#### USER SAFETY RECOMMENDATIONS

Users should wash hands with plenty of soap and water before eating, drinking, chewing gum, using tobacco, or using the toilet.

Users should remove clothing immediately if pesticide gets inside. Then wash thoroughly and put on clean clothing.

**FIRST AID:** Call a Poison Control Center or doctor for treatment advice. **IF IN EYES:**

- Hold eye open and rinse slowly and gently with water for 15-20 minutes. • Remove contact lenses, if present, after the first 5 minutes, then continue rinsing eye. **IF ON SKIN OR CLOTHING:** • Take off contaminated clothing. • Rinse skin immediately with plenty of water for 15-20 minutes.

**HOT LINE NUMBER:** Have the product container or label with you when calling a Poison Control Center or doctor, or going for treatment. You may also contact 1-800-275-1414 for emergency medical treatment information.

#### STORAGE AND DISPOSAL

**STORAGE:** Store in a cool, dry area inaccessible to children and pets.

**CONTAINER HANDLING:** Non-refillable container. Do not reuse or refill container. **If empty:** Place in trash or offer for recycling if available.

**If partly filled:** Call your local solid waste agency for disposal instructions. Never place unused product down any indoor or outdoor drain.

This container is sold by weight, not by volume. You can be assured of proper weight even though some settling of contents normally occurs during transportation and handling.

EPA Reg. No.  
2724-777-2596

EPA Est. No. 39578-TX-1

Made for The Hartz  
Mountain Corporation,  
400 Plaza Drive,  
Secaucus, NJ 07094

Hartz® and other  
trademarks are  
trademarks of The Hartz  
Mountain Corporation.  
508537

