

Combiva II 3-10 lbs

FOR DOGS AND PUPPIES 7 weeks or older

1 Tear through perforation **2** Fold back the safety tab **3** Cut with scissors to open applicator

RESTRICTIONS:

- Do not allow children to apply product.
- Do not apply more than one tube per treatment.
- Do not split one tube between two dogs.
- Do not treat your dog with more than one pesticide product at a time.

Over dosing your dog can result in serious illness and even death. See package insert for complete directions for use.

51087-01

Combiva II 3-10 lbs

FOR DOGS AND PUPPIES 7 weeks or older

CAUTION: HAZARDOUS TO HUMANS Harmful if swallowed. Causes moderate eye irritation. Avoid contact with eyes and clothing. Wash hands thoroughly with soap and warm water after handling and before eating, drinking, chewing gum, using tobacco or using the toilet. Keep out of reach of children.

HAZARDS TO DOMESTIC ANIMALS Do not use on puppies under 7 weeks of age or weighing less than 3 lbs. As with any product, consult your veterinarian before using this product on medicated, debilitated, aged, pregnant or nursing dogs. If your dog is exhibiting signs or is being treated for skin dermatitis, talk to your vet before applying any topical flea and tick control product.

SIDE EFFECTS Monitor your dog after application. Side effects, although rare, may include signs of skin irritation such as redness, scratching, or other signs of discomfort. Gastrointestinal signs such as vomiting or diarrhea have also been reported. If these or other side effects occur, consult your veterinarian or call 1-800-999-0297. Have the product container or label with you when calling your veterinarian for advice.

DO NOT USE ON CATS If applied to a cat or ingested by a cat, contact your veterinarian.

Manufactured for: Ceva Animal Health, LLC
8735 Rosehill Road, Lenexa, KS 66215
D931308-US / 77-81-42
Combiva is a registered trademark of Ceva Santé Animale S.A.
Made in Germany

PRECAUTIONARY STATEMENTS

FIRST AID

If swallowed:	Call a poison control center or doctor immediately for treatment advice. Have a person sip a glass of water if able to swallow. Do not induce vomiting unless told to do so by the poison control center.
If in eyes:	Hold eye open and rinse slowly and gently with water for 15-20 minutes. Call a poison control center or doctor for treatment advice. Do not give anything to an intoxicated person.
If on skin or clothing:	Remove and wash contaminated clothing before reuse. Wash with plenty of soap and water.

1-888-426-4433 For emergency medical treatment information. Have the product container or label with you when calling a poison control center or doctor or going for treatment. You may contact 1-800-999-0297 weekdays between 9am and 6pm EST or Combiva is a registered trademark of Ceva Santé Animale S.A.

Effective flea life cycle and prevents flea eggs and larvae from developing into adult fleas

Combiva® II for Dogs and Puppies is waterproof after application

Effectively kills adult fleas and prevents further re-infestation

Kills re-infesting fleas within 2 hours

Breaks the flea life cycle and prevents flea eggs and larvae from developing into adult fleas

Effective once a month flea protection

Combiva® II for Dogs and Puppies is waterproof after application

Combiva II 3-10 lbs

FOR DOGS AND PUPPIES 7 weeks or older

Contains the same active ingredients as in Advantage® II for Dogs*

Combiva II FOR DOGS AND PUPPIES

3-10 lbs 7 weeks or older

ACTIVE INGREDIENTS:

Imidacloprid	9.10 %
Pyriproxyfen	0.46 %
OTHER INGREDIENTS:	90.44 %
TOTAL	100.00 %

Net Contents: 0.042 fl. oz. (3 doses, each dose 0.014 fl. oz.)
EPA Est. No. 74720-DEU-01
EPA Reg. No. 83399-17

KEEP OUT OF REACH OF CHILDREN

CAUTION
See Back Panel / Package Insert for additional Precautionary Statements, First Aid and Directions for Use.

Use only on dogs and puppies weighing 3-10 lbs. and 7 weeks of age or older

Combiva® II for Dogs and Puppies treats and prevents further flea infestation on dogs and puppies 7 weeks and older

x3

DO NOT USE ON CATS

Ceva

*Combiva® II for Dogs and Puppies is not manufactured or distributed by Bayer. Advantage is a registered trademark of Bayer.

Edelmann Group	Date/name:
A x B x H (mm): 147.5 x 16.5 x 111	Name:
Kunde: Klocke Verpackungsservice	Prüfakt:
Material: 280 g/m² GC1 Performa White	XM / YM (mm):
Faser	

Combiva® II

FOR DOGS AND PUPPIES

**3-10 lbs,
7 weeks or older**

ACTIVE INGREDIENTS:

Imidacloprid 9.10%

Pyriproxyfen 0.46%

OTHER INGREDIENTS 90.44%

TOTAL 100.00%

Combiva® II For Dogs and Puppies treats and prevents further flea infestation on dogs and puppies 7 weeks and older

CAUTION

KEEP OUT OF REACH OF CHILDREN

FIRST AID	
If swallowed:	Call a poison control center or doctor immediately for treatment advice. Have a person sip a glass of water if able to swallow. Do not induce vomiting unless told to do so by the poison control center or doctor. Do not give anything to an unconscious person.
If in eyes:	Hold eye open and rinse slowly and gently with water for 15-20 minutes. Remove contact lenses, if present after the first 5 minutes then continue rinsing eye. Call a poison control center or doctor for treatment advice.
If on skin or clothing:	Wash with plenty of soap and water. Remove and wash contaminated clothing before reuse.

Have the product container or label with you when calling a poison control center or doctor or going for treatment. You may contact 1-800-999-0297 weekdays between 9am and 6pm EST or 1-888-426-4435 for emergency medical treatment information.

PRECAUTIONARY STATEMENTS

HAZARDS TO HUMANS

CAUTION: Harmful if swallowed. Causes moderate eye irritation. Avoid contact with eyes or clothing. Wash hands thoroughly with soap and warm water after handling and before eating, drinking, chewing gum, using tobacco or using the toilet. Keep out of reach of children.

HAZARDS TO DOMESTIC ANIMALS

FOR EXTERNAL USE ON DOGS ONLY. DO NOT USE ON CATS.

Do not use on puppies under 7 weeks of age or weighing less than 3 lbs. As with any product, consult your veterinarian before using this product on medicated, debilitated, aged, pregnant or nursing dogs. If your dog is exhibiting signs or is being treated for skin dermatitis, talk to your vet before applying any topical flea and tick control product.

SIDE EFFECTS:

Monitor your dog after application. Side effects, although rare, may include signs of skin irritation such as redness, scratching, or other signs of discomfort.

Gastrointestinal signs such as vomiting or diarrhea have also been reported. If these or other side effects occur, consult your veterinarian or call 1-800-999-0297. Have the product container or label with you when calling your veterinarian for advice.

DO NOT USE ON CATS.

Keep cats away from treated dog for 24 hours.

If applied to a cat or ingested by a cat, contact your veterinarian.



DIRECTIONS FOR USE

It is a violation of Federal law to use this product in a manner inconsistent with its labeling.

READ ENTIRE LABEL BEFORE EACH USE

CONSUMER INFORMATION

Combiva® II For Dogs & Puppies kills fleas within 12 hours. Combiva® II For Dogs & Puppies prevents flea infestation for 1 month.

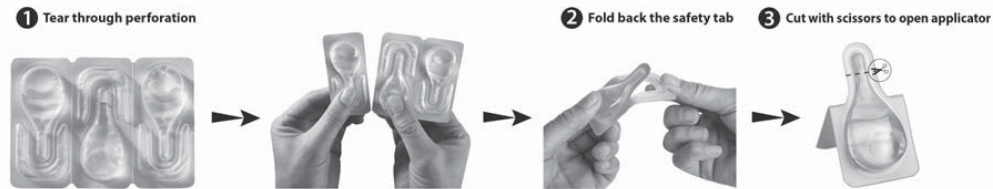
RESTRICTIONS:

- Do not allow children to apply product.
- Weigh your dog to be sure you are using the right size product for your dog.
- For use only on dogs and puppies 7 weeks and older weighing 3-10 lbs.

- Do not apply more than one tube per treatment.
- Do not split one tube between two dogs.
- Do not treat your dog with more than one pesticide product at a time. Over dosing your dog can result in serious illness and even death.
- Do not use on other animals.
- Do not have contact or allow children to have contact with treated area until completely dry.

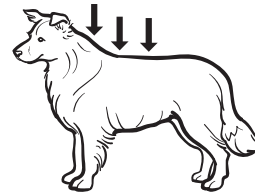
TO PREVENT HARM TO YOU AND YOUR DOG, READ ENTIRE LABEL BEFORE EACH USE. FOLLOW ALL DIRECTIONS AND PRECAUTIONARY STATEMENTS CAREFULLY. FOR EXTERNAL USE ON DOGS ONLY. DO NOT USE ON CATS. DO NOT USE ON OTHER ANIMALS.

OPENING INSTRUCTIONS:



HOW TO APPLY:

1. The dog should be standing or in a comfortable position for easy application. Apply the entire contents of the applicator evenly to three spots along the dog's back, from the shoulder to the middle of the back.
2. At each spot, part the hair down to the level of the skin and gently squeeze the applicator to apply the product. Avoid superficial application to the dog's hair.
3. Do not apply an excessive amount of solution to any one spot. This could cause the product to run off the dog. Do not get the product in the dog's eyes or mouth or allow your dog to ingest the product. Do not use more than one tube on dogs greater than 55 lbs.
4. Discard the empty applicator as outlined in the Storage and Disposal section.
5. Repeat every month, or as recommended by your veterinarian.



FREQUENCY OF APPLICATION

Treatment of Combiva® II For Dogs & Puppies will kill fleas on dogs and puppies within 12 hours and re-infesting fleas within 2 hours. It is possible pre-existing pupae in the environment may continue to emerge for 6 weeks or longer depending on climatic conditions. Use Combiva® II For Dogs & Puppies monthly for the control and prevention of flea re-infestations.

STORAGE AND DISPOSAL

Do not contaminate water, food or feed by storage or disposal.

PESTICIDE STORAGE: Store in a cool, dry place. Keep out of reach of children.

PESTICIDE DISPOSAL AND CONTAINER HANDLING: Non-refillable container. Do not reuse or refill this container.

If empty: Place in trash or offer for recycling, if available. **If partly filled:** Call your local solid waste agency for disposal instructions. Never place unused product down any indoor or outdoor drain.

LIMITED WARRANTY AND LIMITATION OF DAMAGES

Seller warrants that the material conforms to the chemical parameters of the US EPA registration and the label. To the extent consistent with applicable law, seller makes no warranty, express or implied, other than indicated on the label. Buyer and user assume all risk of use and handling of this material. To the extent consistent with applicable law, any damages arising from use of this product or a breach of this warranty shall be limited to direct damages and shall not include consequential or incidental damages such as loss of profit or values.

D93130B-US / 08-A1-v2

Ceva Animal Health, LLC, 8735 Rosehill Road, Lenexa, KS 66215

Combiva® is a registered trademark of Ceva Santé Animale S.A.

EPA Reg. No. 83399-17 EPA Est. no. 74720-DEU-01

Made in Germany



191

Combiva II 11-20 lbs

FOR DOGS AND PUPPIES 7 weeks or older

1 Tear through perforation

2 Fold back the safety tab

3 Cut with scissors to open applicator

RESTRICTIONS:

- Do not allow children to apply product.
- Do not apply more than one tube per treatment.
- Do not split one tube between two dogs.
- Do not treat your dog with more than one pesticide product at a time.

Over dosing your dog can result in serious illness and even death. See package insert for complete directions for use.

51088-01

Combiva II 11-20 lbs
FOR DOGS AND PUPPIES 7 weeks or older

Ceva

8255 Porsche Hall, Lenexa, KS 66215
D931408-US / 17-81-92
Combiva II is a registered trademark of Ceva Santé Animale S.A.

Manufactured for:
Ceva Animal Health, LLC
Ceva Animal Health, LLC
Ceva Animal Health, LLC

Recycling symbol: **RECYCLABLE PACKAGING**
Made in Germany

DO NOT USE ON CATS

Keep cats away from treated dog for 24 hours.
Contact your veterinarian.

FIRST AID

If swallowed: Call poison control center or doctor immediately for treatment advice. Do not induce vomiting unless told to do so by the poison control center or doctor. Have a person sip a glass of water if able to swallow.

If in eyes: Hold eye open and rinse slowly and gently with water for 15-20 minutes. Do not give anything to an unconscious person. Remove contact lenses, if present, after the first 5 minutes, then continue rinsing eye. Call a poison control center or doctor for treatment advice.

If on skin: Wash with plenty of soap and water. Remove and wash contaminated clothing before reuse.

Have the product container or label with you when calling a poison control center or doctor or going to treatment. You may contact 1-800-999-0277 weekdays between 9am and 6pm EST or 1-800-426-4433 for emergency medical treatment information.

Combiva II 11-20 lbs
FOR DOGS AND PUPPIES 7 weeks or older

Ceva

8255 Porsche Hall, Lenexa, KS 66215
D931408-US / 17-81-92
Combiva II is a registered trademark of Ceva Santé Animale S.A.

Manufactured for:
Ceva Animal Health, LLC
Ceva Animal Health, LLC
Ceva Animal Health, LLC

Recycling symbol: **RECYCLABLE PACKAGING**
Made in Germany

DO NOT USE ON CATS

Keep cats away from treated dog for 24 hours.
Contact your veterinarian.

Combiva II 11-20 lbs
FOR DOGS AND PUPPIES 7 weeks or older

Ceva

8255 Porsche Hall, Lenexa, KS 66215
D931408-US / 17-81-92
Combiva II is a registered trademark of Ceva Santé Animale S.A.

Manufactured for:
Ceva Animal Health, LLC
Ceva Animal Health, LLC
Ceva Animal Health, LLC

Recycling symbol: **RECYCLABLE PACKAGING**
Made in Germany

Combiva II 11-20 lbs
FOR DOGS AND PUPPIES 7 weeks or older

Ceva

8255 Porsche Hall, Lenexa, KS 66215
D931408-US / 17-81-92
Combiva II is a registered trademark of Ceva Santé Animale S.A.

Manufactured for:
Ceva Animal Health, LLC
Ceva Animal Health, LLC
Ceva Animal Health, LLC

Recycling symbol: **RECYCLABLE PACKAGING**
Made in Germany

Combiva II 11-20 lbs
FOR DOGS AND PUPPIES 7 weeks or older

Ceva

8255 Porsche Hall, Lenexa, KS 66215
D931408-US / 17-81-92
Combiva II is a registered trademark of Ceva Santé Animale S.A.

Manufactured for:
Ceva Animal Health, LLC
Ceva Animal Health, LLC
Ceva Animal Health, LLC

Recycling symbol: **RECYCLABLE PACKAGING**
Made in Germany

DO NOT USE ON CATS

Keep cats away from treated dog for 24 hours.
Contact your veterinarian.

Material:	280 g/m ² GC1 Performa White	Kunde:	Klocke Verpackungsservice	Edelmann Group
XM / YM (mm):	365.004 x 180.500	Projekt:	CEVA Combo US	Dateiname: M10842-02
A x B x H (mm):	147.5 x 16.5 x 111	Name:	F. Schilling	
<p style="font-size: 2em; margin: 0;">09.09.14</p> <p style="font-size: 0.8em; margin: 0;">Faser</p>				

Combiva® II

FOR DOGS AND PUPPIES

**11-20 lbs,
7 weeks or older**

ACTIVE INGREDIENTS:

Imidacloprid 9.10%

Pyriproxyfen 0.46%

OTHER INGREDIENTS 90.44%

TOTAL 100.00%

Combiva® II For Dogs and Puppies treats and prevents further flea infestation on dogs and puppies 7 weeks and older

CAUTION

KEEP OUT OF REACH OF CHILDREN

FIRST AID	
If swallowed:	Call a poison control center or doctor immediately for treatment advice. Have a person sip a glass of water if able to swallow. Do not induce vomiting unless told to do so by the poison control center or doctor. Do not give anything to an unconscious person.
If in eyes:	Hold eye open and rinse slowly and gently with water for 15-20 minutes. Remove contact lenses, if present after the first 5 minutes then continue rinsing eye. Call a poison control center or doctor for treatment advice.
If on skin or clothing:	Wash with plenty of soap and water. Remove and wash contaminated clothing before reuse.

Have the product container or label with you when calling a poison control center or doctor or going for treatment. You may contact 1-800-999-0297 weekdays between 9am and 6pm EST or 1-888-426-4435 for emergency medical treatment information.

PRECAUTIONARY STATEMENTS

HAZARDS TO HUMANS

CAUTION: Harmful if swallowed. Causes moderate eye irritation. Avoid contact with eyes or clothing. Wash hands thoroughly with soap and warm water after handling and before eating, drinking, chewing gum, using tobacco or using the toilet. Keep out of reach of children.

HAZARDS TO DOMESTIC ANIMALS

FOR EXTERNAL USE ON DOGS ONLY. DO NOT USE ON CATS.

Do not use on puppies under 7 weeks of age or weighing less than 11 lbs. As with any product, consult your veterinarian before using this product on medicated, debilitated, aged, pregnant or nursing dogs. If your dog is exhibiting signs or is being treated for skin dermatitis, talk to your vet before applying any topical flea and tick control product.

SIDE EFFECTS:

Monitor your dog after application. Side effects, although rare, may include signs of skin irritation such as redness, scratching, or other signs of discomfort.

Gastrointestinal signs such as vomiting or diarrhea have also been reported. If these or other side effects occur, consult your veterinarian or call 1-800-999-0297. Have the product container or label with you when calling your veterinarian for advice.

DO NOT USE ON CATS.

Keep cats away from treated dog for 24 hours.

If applied to a cat or ingested by a cat, contact your veterinarian.



DIRECTIONS FOR USE

It is a violation of Federal law to use this product in a manner inconsistent with its labeling.

READ ENTIRE LABEL BEFORE EACH USE

CONSUMER INFORMATION

Combiva® II For Dogs & Puppies kills fleas within 12 hours. Combiva® II For Dogs & Puppies prevents flea infestation for 1 month.

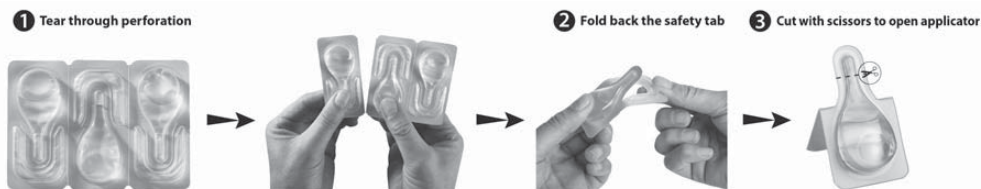
RESTRICTIONS:

- Do not allow children to apply product.
- Weigh your dog to be sure you are using the right size product for your dog.
- For use only on dogs and puppies 7 weeks and older weighing 11-20 lbs.

- Do not apply more than one tube per treatment.
- Do not split one tube between two dogs.
- Do not treat your dog with more than one pesticide product at a time. Over dosing your dog can result in serious illness and even death.
- Do not use on other animals.
- Do not have contact or allow children to have contact with treated area until completely dry.

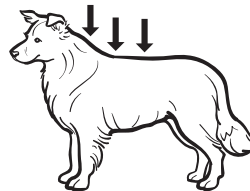
TO PREVENT HARM TO YOU AND YOUR DOG, READ ENTIRE LABEL BEFORE EACH USE. FOLLOW ALL DIRECTIONS AND PRECAUTIONARY STATEMENTS CAREFULLY. FOR EXTERNAL USE ON DOGS ONLY. DO NOT USE ON CATS. DO NOT USE ON OTHER ANIMALS.

OPENING INSTRUCTIONS:



HOW TO APPLY:

1. The dog should be standing or in a comfortable position for easy application. Apply the entire contents of the applicator evenly to three spots along the dog's back, from the shoulder to the middle of the back.
2. At each spot, part the hair down to the level of the skin and gently squeeze the applicator to apply the product. Avoid superficial application to the dog's hair.
3. Do not apply an excessive amount of solution to any one spot. This could cause the product to run off the dog. Do not get the product in the dog's eyes or mouth or allow your dog to ingest the product. Do not use more than one tube on dogs greater than 55 lbs.
4. Discard the empty applicator as outlined in the Storage and Disposal section.
5. Repeat every month, or as recommended by your veterinarian.



FREQUENCY OF APPLICATION

Treatment of Combiva® II For Dogs & Puppies will kill fleas on dogs and puppies within 12 hours and re-infesting fleas within 2 hours. It is possible pre-existing pupae in the environment may continue to emerge for 6 weeks or longer depending on climatic conditions. Use Combiva® II For Dogs & Puppies monthly for the control and prevention of flea re-infestations.

STORAGE AND DISPOSAL

Do not contaminate water, food or feed by storage or disposal.

PESTICIDE STORAGE: Store in a cool, dry place. Keep out of reach of children.

PESTICIDE DISPOSAL AND CONTAINER HANDLING: Non-refillable container. Do not reuse or refill this container.

If empty: Place in trash or offer for recycling, if available. **If partly filled:** Call your local solid waste agency for disposal instructions. Never place unused product down any indoor or outdoor drain.

LIMITED WARRANTY AND LIMITATION OF DAMAGES

Seller warrants that the material conforms to the chemical parameters of the US EPA registration and the label. To the extent consistent with applicable law, seller makes no warranty, express or implied, other than indicated on the label. Buyer and user assume all risk of use and handling of this material. To the extent consistent with applicable law, any damages arising from use of this product or a breach of this warranty shall be limited to direct damages and shall not include consequential or incidental damages such as loss of profit or values.

D93140B-US / 08-C1-v1

Ceva Animal Health, LLC, 8735 Rosehill Road, Lenexa, KS 66215

Combiva® is a registered trademark of Ceva Santé Animale S.A.

EPA Reg. No. 83399-17 EPA Est. no. 74720-DEU-01

Made in Germany

101

Combiva II FOR DOGS AND PUPPIES 21-55 lbs 7 weeks or older

- Tear through perforation
- Fold back the safety tab
- Cut with scissors to open applicator

RESTRICTIONS:

- Do not allow children to apply product.
- Do not apply more than one tube per treatment.
- Do not split one tube between two dogs.
- Do not treat your dog with more than one pesticide product at a time.

Over dosing your dog can result in serious illness and even death. See package insert for complete directions for use.

51089-01

FOR DOGS AND PUPPIES 21-55 lbs 7 weeks or older

1-888-426-4435 for emergency medical treatment information.
 For treatment, you may contact 1-800-999-0297 weekdays between 9am and 6pm EST or
 Have the product container or label with you when calling a poison control center or doctor or going
 to a hospital. Do not give anything to an unconscious person.
 If swallowed: Call a poison control center or doctor immediately for treatment advice.
 Do not induce vomiting unless told to do so by the poison control center or doctor.
 If in eyes: Hold eye open and rinse slowly and gently with water for 15-20 minutes.
 Remove contact lenses, if present, after the first 5 minutes, then continue rinsing eye.
 If on skin: Wash with plenty of soap and water.
 Remove and wash contaminated clothing before reuse.

Manufactured for:
 Ceva Animal Health, LLC
 855 Rossbush Lane, Lenexa, KS 66215
 00915008-US / 171-81-42
 Ceva Animal Health, LLC
 855 Rossbush Lane, Lenexa, KS 66215
 Ceva Animal Health, LLC
 855 Rossbush Lane, Lenexa, KS 66215
 Ceva Animal Health, LLC
 855 Rossbush Lane, Lenexa, KS 66215

DO NOT USE ON CATS
 Keep cats away from treated dog for 24 hours.
 Do not apply to a cat or ingested by a cat.
 Contact your veterinarian.

Monitor your dog after application. Side effects, although rare, may include signs of skin irritation such as redness, scratching, or other signs of discomfort. Gastrointestinal signs such as vomiting or diarrhea have also been reported. If these or other side effects occur, consult your veterinarian or call 1-800-999-0297. Have the product container or label with you when calling your veterinarian for advice.

SIDE EFFECTS
 Monitor your dog after application. Side effects, although rare, may include signs of skin irritation such as redness, scratching, or other signs of discomfort. Gastrointestinal signs such as vomiting or diarrhea have also been reported. If these or other side effects occur, consult your veterinarian or call 1-800-999-0297. Have the product container or label with you when calling your veterinarian for advice.

HAZARDS TO DOMESTIC ANIMALS
 Do not use on puppies under 7 weeks of age or weighing less than 21 lbs. As with any product, consult your veterinarian before using this product on medicated, debilitated, aged, pregnant or nursing dogs. If your dog is exhibiting signs or is being treated for skin dermatitis, talk to your vet before applying any topical flea and tick control product.

HAZARDS TO HUMANS
CAUTION: Harmful if swallowed. Causes moderate eye irritation. Avoid contact with eyes, ear, nose, mouth, or clothing. Wash hands thoroughly with soap and warm water after handling and before eating, drinking, chewing gum, using tobacco or using the toilet. Keep out of reach of children.

PRECAUTIONARY STATEMENTS
 HAZARDS TO HUMANS
CAUTION: Harmful if swallowed. Causes moderate eye irritation. Avoid contact with eyes, ear, nose, mouth, or clothing. Wash hands thoroughly with soap and warm water after handling and before eating, drinking, chewing gum, using tobacco or using the toilet. Keep out of reach of children.

HAZARDS TO DOMESTIC ANIMALS
 Do not use on puppies under 7 weeks of age or weighing less than 21 lbs. As with any product, consult your veterinarian before using this product on medicated, debilitated, aged, pregnant or nursing dogs. If your dog is exhibiting signs or is being treated for skin dermatitis, talk to your vet before applying any topical flea and tick control product.

FOR EXTERNAL USE ON DOGS ONLY. DO NOT USE ON CATS.

Effectively kills adult fleas and prevents further re-infestation
 Kills re-infesting fleas within 2 hours
 Breaks the flea life cycle and prevents flea eggs and larvae from developing into adult fleas
 Effective once a month flea protection
 Combiva® II for Dogs and Puppies is waterproof after application

21-55 lbs 7 weeks or older

FOR DOGS AND PUPPIES 21-55 lbs 7 weeks or older

21-55 lbs 7 weeks or older

Contains the same active ingredients as in Advantage® II for Dogs*

Combiva II FOR DOGS AND PUPPIES

ACTIVE INGREDIENTS:
 Imidacloprid 9.10 %
 Pyriproxyfen 0.46 %
OTHER INGREDIENTS: 90.44 %
TOTAL: 100.00 %

Net Contents: 0.255 fl. oz. (3 doses, each dose 0.085 fl. oz.)
 EPA Est. No. 74720-DEU-01
 EPA Reg. No. 83399-17

KEEP OUT OF REACH OF CHILDREN
CAUTION
 See Back Panel / Package Insert for additional Precautionary Statements, First Aid and Directions for Use.

Use only on dogs and puppies weighing 21-55 lbs. and 7 weeks of age or older

Combiva® II for Dogs and Puppies treats and prevents further flea infestation on dogs and puppies 7 weeks and older

x3

*Combiva® II for Dogs and Puppies is not manufactured or distributed by Bayer. Advantage is a registered trademark of Bayer.

DO NOT USE ON CATS

Ceva

Edelmann Group	Dateiname: M10842-02
A x B x H (mm): 147.5 x 16.5 x 111	Name: F.-Schilling
Kunde: Klocke Verpackungsservice	Projekt: CEVA Combo US
Material: 280 g/m² GC1 Performa White	XM / YM (mm): 365.004 x 180.500
Faser	09.09.14

Combiva® II

FOR DOGS AND PUPPIES

**21-55 lbs,
7 weeks or older**

ACTIVE INGREDIENTS:	
Imidacloprid	9.10%
Pyriproxyfen	0.46%
OTHER INGREDIENTS	90.44%
TOTAL	100.00%

Combiva® II For Dogs and Puppies treats and prevents further flea infestation on dogs and puppies 7 weeks and older

CAUTION

KEEP OUT OF REACH OF CHILDREN

FIRST AID	
If swallowed:	Call a poison control center or doctor immediately for treatment advice. Have a person sip a glass of water if able to swallow. Do not induce vomiting unless told to do so by the poison control center or doctor. Do not give anything to an unconscious person.
If in eyes:	Hold eye open and rinse slowly and gently with water for 15-20 minutes. Remove contact lenses, if present after the first 5 minutes then continue rinsing eye. Call a poison control center or doctor for treatment advice.
If on skin or clothing:	Wash with plenty of soap and water. Remove and wash contaminated clothing before reuse.

Have the product container or label with you when calling a poison control center or doctor or going for treatment. You may contact 1-800-999-0297 weekdays between 9am and 6pm EST or 1-888-426-4435 for emergency medical treatment information.

PRECAUTIONARY STATEMENTS

HAZARDS TO HUMANS

CAUTION: Harmful if swallowed. Causes moderate eye irritation. Avoid contact with eyes or clothing. Wash hands thoroughly with soap and warm water after handling and before eating, drinking, chewing gum, using tobacco or using the toilet. Keep out of reach of children.

HAZARDS TO DOMESTIC ANIMALS

FOR EXTERNAL USE ON DOGS ONLY. DO NOT USE ON CATS.

Do not use on puppies under 7 weeks of age or weighing less than 21 lbs. As with any product, consult your veterinarian before using this product on medicated, debilitated, aged, pregnant or nursing dogs. If your dog is exhibiting signs or is being treated for skin dermatitis, talk to your vet before applying any topical flea and tick control product.

SIDE EFFECTS:

Monitor your dog after application. Side effects, although rare, may include signs of skin irritation such as redness, scratching, or other signs of discomfort.

Gastrointestinal signs such as vomiting or diarrhea have also been reported. If these or other side effects occur, consult your veterinarian or call 1-800-999-0297. Have the product container or label with you when calling your veterinarian for advice.

DO NOT USE ON CATS.

Keep cats away from treated dog for 24 hours.
If applied to a cat or ingested by a cat, contact your veterinarian.



DIRECTIONS FOR USE

It is a violation of Federal law to use this product in a manner inconsistent with its labeling.

READ ENTIRE LABEL BEFORE EACH USE

CONSUMER INFORMATION

Combiva® II For Dogs & Puppies kills fleas within 12 hours. Combiva® II For Dogs & Puppies prevents flea infestation for 1 month.

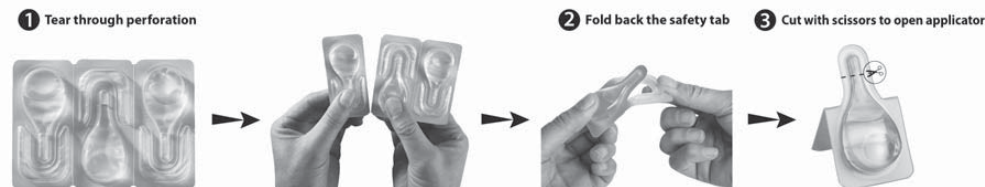
RESTRICTIONS:

- Do not allow children to apply product.
- Weigh your dog to be sure you are using the right size product for your dog.
- For use only on dogs and puppies 7 weeks and older weighing 21-55 lbs.

- Do not apply more than one tube per treatment.
- Do not split one tube between two dogs.
- Do not treat your dog with more than one pesticide product at a time. Over dosing your dog can result in serious illness and even death.
- Do not use on other animals.
- Do not have contact or allow children to have contact with treated area until completely dry.

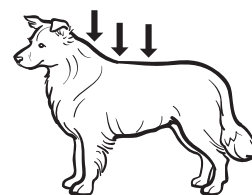
TO PREVENT HARM TO YOU AND YOUR DOG, READ ENTIRE LABEL BEFORE EACH USE. FOLLOW ALL DIRECTIONS AND PRECAUTIONARY STATEMENTS CAREFULLY. FOR EXTERNAL USE ON DOGS ONLY. DO NOT USE ON CATS. DO NOT USE ON OTHER ANIMALS.

OPENING INSTRUCTIONS:



HOW TO APPLY:

1. The dog should be standing or in a comfortable position for easy application. Apply the entire contents of the applicator evenly to three spots along the dog's back, from the shoulder to the middle of the back.
2. At each spot, part the hair down to the level of the skin and gently squeeze the applicator to apply the product. Avoid superficial application to the dog's hair.
3. Do not apply an excessive amount of solution to any one spot. This could cause the product to run off the dog. Do not get the product in the dog's eyes or mouth or allow your dog to ingest the product. Do not use more than one tube on dogs greater than 55 lbs.
4. Discard the empty applicator as outlined in the Storage and Disposal section.
5. Repeat every month, or as recommended by your veterinarian.



FREQUENCY OF APPLICATION

Treatment of Combiva® II For Dogs & Puppies will kill fleas on dogs and puppies within 12 hours and re-infesting fleas within 2 hours. It is possible pre-existing pupae in the environment may continue to emerge for 6 weeks or longer depending on climatic conditions. Use Combiva® II For Dogs & Puppies monthly for the control and prevention of flea re-infestations.

STORAGE AND DISPOSAL

Do not contaminate water, food or feed by storage or disposal.

PESTICIDE STORAGE: Store in a cool, dry place. Keep out of reach of children.

PESTICIDE DISPOSAL AND CONTAINER HANDLING: Non-refillable container. Do not reuse or refill this container.

If empty: Place in trash or offer for recycling, if available. **If partly filled:** Call your local solid waste agency for disposal instructions. Never place unused product down any indoor or outdoor drain.

LIMITED WARRANTY AND LIMITATION OF DAMAGES

Seller warrants that the material conforms to the chemical parameters of the US EPA registration and the label. To the extent consistent with applicable law, seller makes no warranty, express or implied, other than indicated on the label. Buyer and user assume all risk of use and handling of this material. To the extent consistent with applicable law, any damages arising from use of this product or a breach of this warranty shall be limited to direct damages and shall not include consequential or incidental damages such as loss of profit or values.

D93150B-US / 08-D1-v1

Ceva Animal Health, LLC, 8735 Rosehill Road, Lenexa, KS 66215

Combiva® is a registered trademark of Ceva Santé Animale S.A.

EPA Reg. No. 83399-17 EPA Est. no. 74720-DEU-01

Made in Germany

Combiva® II FOR DOGS AND PUPPIES

**Over 55 lbs,
7 weeks or older**

ACTIVE INGREDIENTS:

Imidacloprid 9.10%
Pyriproxyfen 0.46%

OTHER INGREDIENTS 90.44%
TOTAL 100.00%

Combiva® II For Dogs and Puppies treats and prevents further flea infestation on dogs and puppies 7 weeks and older

**CAUTION
KEEP OUT OF REACH OF CHILDREN**

FIRST AID	
If swallowed:	Call a poison control center or doctor immediately for treatment advice. Have a person sip a glass of water if able to swallow. Do not induce vomiting unless told to do so by the poison control center or doctor. Do not give anything to an unconscious person.
If in eyes:	Hold eye open and rinse slowly and gently with water for 15-20 minutes. Remove contact lenses, if present after the first 5 minutes then continue rinsing eye. Call a poison control center or doctor for treatment advice.
If on skin or clothing:	Wash with plenty of soap and water. Remove and wash contaminated clothing before reuse.

Have the product container or label with you when calling a poison control center or doctor or going for treatment. You may contact 1-800-999-0297 weekdays between 9am and 6pm EST or 1-888-426-4435 for emergency medical treatment information.

PRECAUTIONARY STATEMENTS

HAZARDS TO HUMANS

CAUTION: Harmful if swallowed. Causes moderate eye irritation. Avoid contact with eyes or clothing. Wash hands thoroughly with soap and warm water after handling and before eating, drinking, chewing gum, using tobacco or using the toilet. Keep out of reach of children.

HAZARDS TO DOMESTIC ANIMALS

FOR EXTERNAL USE ON DOGS ONLY. DO NOT USE ON CATS.

Do not use on puppies under 7 weeks of age or weighing less than 55 lbs. As with any product, consult your veterinarian before using this product on medicated, debilitated, aged, pregnant or nursing dogs. If your dog is exhibiting signs or is being treated for skin dermatitis, talk to your vet before applying any topical flea and tick control product.

SIDE EFFECTS:

Monitor your dog after application. Side effects, although rare, may include signs of skin irritation such as redness, scratching, or other signs of discomfort. Gastrointestinal signs such as vomiting or diarrhea have also been reported. If these or other side effects occur, consult your veterinarian or call 1-800-999-0297. Have the product container or label with you when calling your veterinarian for advice.

DO NOT USE ON CATS.

Keep cats away from treated dog for 24 hours.
If applied to a cat or ingested by a cat, contact your veterinarian.



DIRECTIONS FOR USE

**It is a violation of Federal law to use this product in a manner inconsistent with its labeling.
READ ENTIRE LABEL BEFORE EACH USE**

CONSUMER INFORMATION

Combiva® II For Dogs & Puppies kills fleas within 12 hours. Combiva® II For Dogs & Puppies prevents flea infestation for 1 month.

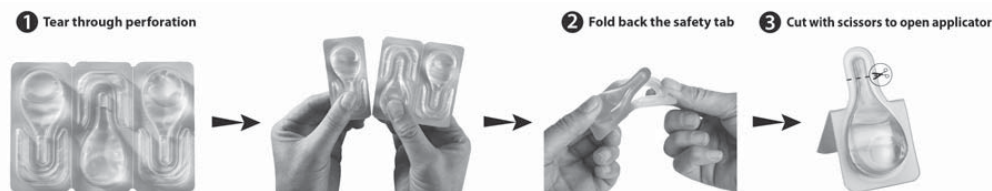
RESTRICTIONS:

- Do not allow children to apply product.
- Weigh your dog to be sure you are using the right size product for your dog.
- For use only on dogs and puppies 7 weeks and older weighing over 55 lbs.

- Do not apply more than one tube per treatment.
- Do not split one tube between two dogs.
- Do not treat your dog with more than one pesticide product at a time. Over dosing your dog can result in serious illness and even death.
- Do not use on other animals.
- Do not have contact or allow children to have contact with treated area until completely dry.

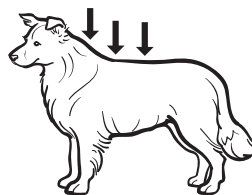
TO PREVENT HARM TO YOU AND YOUR DOG, READ ENTIRE LABEL BEFORE EACH USE. FOLLOW ALL DIRECTIONS AND PRECAUTIONARY STATEMENTS CAREFULLY. FOR EXTERNAL USE ON DOGS ONLY. DO NOT USE ON CATS. DO NOT USE ON OTHER ANIMALS.

OPENING INSTRUCTIONS:



HOW TO APPLY:

1. The dog should be standing or in a comfortable position for easy application. Apply the entire contents of the applicator evenly to three spots along the dog's back, from the shoulder to the middle of the back.
2. At each spot, part the hair down to the level of the skin and gently squeeze the applicator to apply the product. Avoid superficial application to the dog's hair.
3. Do not apply an excessive amount of solution to any one spot. This could cause the product to run off the dog. Do not get the product in the dog's eyes or mouth or allow your dog to ingest the product. Do not use more than one tube on dogs greater than 55 lbs.
4. Discard the empty applicator as outlined in the Storage and Disposal section.
5. Repeat every month, or as recommended by your veterinarian.



FREQUENCY OF APPLICATION

Treatment of Combiva® II For Dogs & Puppies will kill fleas on dogs and puppies within 12 hours and re-infesting fleas within 2 hours. It is possible pre-existing pupae in the environment may continue to emerge for 6 weeks or longer depending on climatic conditions. Use Combiva® II For Dogs & Puppies monthly for the control and prevention of flea re-infestations.

STORAGE AND DISPOSAL

Do not contaminate water, food or feed by storage or disposal.

PESTICIDE STORAGE: Store in a cool, dry place. Keep out of reach of children.

PESTICIDE DISPOSAL AND CONTAINER HANDLING: Non-refillable container. Do not reuse or refill this container.

If empty: Place in trash or offer for recycling, if available. **If partly filled:** Call your local solid waste agency for disposal instructions. Never place unused product down any indoor or outdoor drain.

LIMITED WARRANTY AND LIMITATION OF DAMAGES

Seller warrants that the material conforms to the chemical parameters of the US EPA registration and the label. To the extent consistent with applicable law, seller makes no warranty, express or implied, other than indicated on the label. Buyer and user assume all risk of use and handling of this material. To the extent consistent with applicable law, any damages arising from use of this product or a breach of this warranty shall be limited to direct damages and shall not include consequential or incidental damages such as loss of profit or values.

D93160B-US / 08-E1-v1

Ceva Animal Health, LLC, 8735 Rosehill Road, Lenexa, KS 66215

Combiva® is a registered trademark of Ceva Santé Animale S.A.

EPA Reg. No. 83399-17 EPA Est. no. 74720-DEU-01

Made in Germany