

DOCTORS
FOSTER AND SMITH
FIPROTROL PLUS FOR DOGS

For use ONLY on DOGS and Puppies 8 weeks and older Weighing:
Up to 22 lbs.

DOCTORS
FOSTER AND SMITH
FIPROTROL PLUS
FOR DOGS



**CONTAINS FIPRONIL
AND (S)-METHOPRENE,
THE ACTIVE INGREDIENTS
USED IN FRONTLINE PLUS®**

DOCTORS FOSTER AND SMITH® FIPROTROL™ PLUS for Dogs is not manufactured by or distributed by Merial. FRONTLINE PLUS® is a registered trademark of Merial Limited.

For use ONLY on
DOGS and Puppies
8 weeks
and older Weighing:
Up to 22 lbs.

KILLS FLEAS, TICKS, FLEA EGGS, FLEA LARVAE, CHEWING LICE

Kills all stages of Deer Ticks that may carry Lyme disease. Aids in Control of sarcoptic mange infestations.

● **FAST ACTING** ● **LONG LASTING** ● **WATERPROOF**

ACTIVE INGREDIENTS:

Fipronil	9.80%
(S)-Methoprene	8.80%
OTHER INGREDIENTS	81.40%
TOTAL	100.00%

**KEEP OUT OF REACH OF CHILDREN
CAUTION:**

See back panel for additional precautionary statements.

Net Contents: 0.069 fl. oz. (2.01 ml),
Contains 3 tubes,
each 0.023 fl. oz. (0.67 ml.)



**DO NOT
USE ON
CATS**

DOCTORS
FOSTER AND SMITH
FIPROTROL PLUS FOR DOGS

For use ONLY on DOGS and Puppies
8 weeks and older Weighing:
Up to 22 lbs.

DOCTORS
FOSTER AND SMITH
FIPROTROL PLUS FOR DOGS

For use ONLY on DOGS and Puppies
8 weeks and older Weighing:
Up to 22 lbs.



RM114220

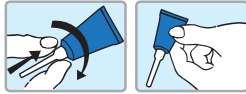
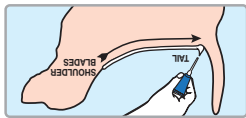
DIRECTIONS FOR USE
It is a violation of Federal law to use this product in a manner inconsistent with its labeling.
READ ENTIRE LABEL BEFORE EACH USE.
USE ONLY ON DOGS OR ON PUPPIES 8 WEEKS OF AGE OR OLDER.
THIS PRODUCT CAN BE USED ON DOGS AND PUPPIES 8 WEEKS OR OLDER, INCLUDING BREEDING, PREGNANT AND LACTATING BITCHES.

1. Remove one applicator tube from the package and hold in an upright position pointed away from your face.
2. Twist dispensing tip clockwise about 1/2 turn while pushing down to break the tube's seal. Do not remove the dispensing tip.
3. Position the dispensing tip on the dog's back between the shoulder blades. Use the dispensing tip of the tube to part the dog's hair so that the product will be applied at skin level. Begin squeezing out the contents of the tube to form a stripe as you move from the shoulder blades along the dog's back to the base of the tail.
4. Repeat every month.

SIDE EFFECTS
Monitor your dog after application. Side effects may include signs of skin irritation such as redness, scratching, or other signs of discomfort. Gastrointestinal signs such as vomiting or diarrhea have also been reported. If these or other side effects occur, consult your veterinarian or call 1-888-843-2956.

STORAGE AND DISPOSAL
Do not contaminate water, food or feed by storage and disposal.
PESTICIDE STORAGE: Keep this product in its tightly closed original container, when not in use. Store in a cool, dry (preferably locked) area that is inaccessible to children and animals.
PESTICIDE DISPOSAL: Wastes resulting from the use of this product may be disposed of on site or at an approved waste disposal facility.
CONTAINER DISPOSAL: Non-refillable container. Do not reuse or refill this container. If empty: Offer for recycling, if available. If partly filled: Call your local solid waste agency for disposal instructions. Never place unused product down any indoor or outdoor drain.

Manufactured for: CAP Supply, Inc.,
303 Perimeter Center North, Suite 300, Atlanta, GA 30346
EPA Reg. No. 2596-165-91019 EPA Est. No. 2596-OH-1



FIRST AID
Have the product container or label with you when calling a poison control center or doctor, or going for treatment. For additional information on this pesticide product (including health concerns, medical emergencies or pesticide incidents) you may call 1-888-843-2956 twenty-four (24) hours per day, seven (7) days per week.

IF SWALLOWED: Call a poison control center or doctor immediately for treatment advice. Have person sip a glass of water if able to swallow. Do not induce vomiting unless told to do so by a poison control center or doctor. Do not give anything by mouth to an unconscious person.

IF IN EYES: Hold eye open and rinse slowly and gently with water for 15-20 minutes. Remove contact lenses, if present, after the first 5 minutes, then continue rinsing eye. Call a poison control center or doctor for treatment advice.

IF ON SKIN OR CLOTHING: Take off contaminated clothing. Rinse skin immediately with plenty of water for 15-20 minutes. Call a poison control center or doctor for treatment advice.

DO NOT USE ON RABBITS, CATS, KITTENS, OR OTHER ANIMALS.
control center or doctor for treatment advice.

HAZARDS TO HUMANS, CAUTION
Harmful if swallowed. Causes eye irritation. Avoid contact with skin, eyes or clothing. Wash hands thoroughly with soap and water after handling and before eating, drinking, chewing gum, using tobacco or using the toilet.

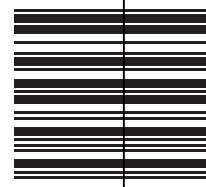
HAZARDS TO DOMESTIC ANIMALS.
For external use only. Do not use on puppies under 8 weeks of age. Sensitivities may occur after using ANY pesticide product for pets. If signs of sensitivity occur bathe your pet with mild soap and rinse with large amounts of water. If signs continue, consult a veterinarian immediately. Pets may experience some temporary irritation at the site of product application. Consult a veterinarian before using this product on debilitated, aged, pregnant or nursing animals. Call 1-888-843-2956 for 24-hour assistance.

PHYSICAL OR CHEMICAL HAZARDS
Incompatible with oxidizing agents.

COMBUSTIBLE: Do not use or store near heat or open flame.

FIPROTROL PLUS FOR DOGS
DOCTORS FOSTER AND SMITH
For use ONLY on DOGS and Puppies
8 weeks and older Weighing: Up to 22 lbs.

DO NOT USE ON CATS



DOCTORS
FOSTER AND SMITH[®]
FIPROTROL PLUS
FOR DOGS



Weighing:
Contains 3 tubes each:
Lot Code:

EPA Reg. No. 2596-165-91019
EPA Est. No. 2596-OH-1



ACTIVE INGREDIENTS:

Fipronil	9.80%
(S)-Methoprene	8.80%

OTHER INGREDIENTS	81.40%
TOTAL	100.00%

KEEP OUT OF REACH OF CHILDREN
CAUTION

Read accompanying label before use



RM114222

RM114219

EPA Est. No. 2596-OH-1
EPA Reg. No. 2596-165-91019

**Read accompanying
label before use**

Caution

**Keep Out of Reach of
Children**

DOCTORS
FOSTER^{AND}SMITHTM
FIPROTROL PLUS
FOR DOGS

Only for use on DOGS AND
PUPPIES 8 WEEKS OR OLDER

5 to 22 lbs.

0.023 fl. oz. (0.67 ml.)

Active Ingredients:

Fipronil 9.8%

(S)-Methoprene 8.8%

DOCTORS
FOSTER AND SMITH | 3 MONTH
SUPPLY

FIPROTROL PLUS™

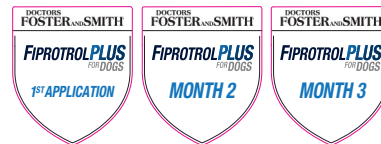
CONTAINS FIPRONIL AND (S)-METHOPRENE

FOR DOGS



REMINDER STICKERS

The first time you treat your dog, place the First Application Sticker on your calendar. Apply Stickers 2, 3 to the calendar 30, and 60 days after the first application to remind you it's time to reapply FIPROTROL PLUS for Dogs.



Manufactured for: CAP Supply, Inc.,
303 Perimeter Center North, Suite 300
Atlanta, GA 30346

For Customer Service please call: 1-888-846-4231



DOCTORS
FOSTER AND SMITH
FIPROTROL PLUS FOR DOGS

For use ONLY on DOGS and Puppies 8 weeks and older Weighing:
23 to 44 lbs.



DOCTORS
FOSTER AND SMITH
FIPROTROL PLUS
FOR DOGS

**CONTAINS FIPRONIL
AND (S)-METHOPRENE,
THE ACTIVE INGREDIENTS
USED IN FRONTLINE PLUS®**

DOCTORS FOSTER AND SMITH® FIPROTROL PLUS for Dogs is not manufactured by or distributed by Merial. FRONTLINE PLUS® is a registered trademark of Merial Limited.

For use ONLY on
DOGS and Puppies
8 weeks
and older Weighing:

23 to 44 lbs.

KILLS FLEAS, TICKS, FLEA EGGS, FLEA LARVAE, CHEWING LICE

Kills all stages of Deer Ticks that may carry Lyme disease. Aids in Control of sarcoptic mange infestations.

● **FAST ACTING** ● **LONG LASTING** ● **WATERPROOF**

ACTIVE INGREDIENTS:

Fipronil	9.80%
(S)-Methoprene	8.80%
OTHER INGREDIENTS	81.40%
TOTAL	100.00%

**KEEP OUT OF REACH OF CHILDREN
CAUTION:**

See back panel for additional precautionary statements.

Net Contents: 0.135 fl. oz. (4.02 ml.),
Contains 3 tubes,
each 0.045 fl. oz. (1.34 ml.)



**DO NOT
USE ON
CATS**

DOCTORS
FOSTER AND SMITH
FIPROTROL PLUS FOR DOGS

For use ONLY on DOGS and Puppies
8 weeks and older Weighing:
23 to 44 lbs.

DOCTORS
FOSTER AND SMITH
FIPROTROL PLUS FOR DOGS

For use ONLY on DOGS and Puppies
8 weeks and older Weighing:
23 to 44 lbs.



RW114569

8

2514156968

7



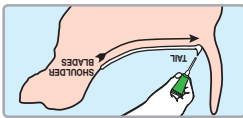
**DO NOT
USE ON
CATS**

Manufactured for: CAP Supply, Inc.,
303 Perimeter Center North, Suite 300, Atlanta, GA 30346
EPA Reg. No. 2596-165-91019 EPA Est. No. 2596-04-1

STORAGE AND DISPOSAL
Do not contaminate water, food or feed by storage and disposal.
PESTICIDE STORAGE: Keep this product in its tightly closed original container, when not in use. Store in a cool, dry (preferably locked) area that is inaccessible to children and animals.
PESTICIDE DISPOSAL: Wastes resulting from the use of this product may be disposed of on site or at an approved waste disposal facility.
CONTAINER DISPOSAL: Non-refillable container. Do not reuse or refill this container. If empty: Offer for recycling, if available. If partly filled: Call your local solid waste agency for disposal instructions. Never place unused product down any indoor or outdoor drain.

SIDE EFFECTS
Monitor your dog after application. Side effects may include signs of skin irritation such as redness, scratching, or other signs of discomfort. Gastrointestinal signs such as vomiting or diarrhea have also been reported. If these or other side effects occur, consult your veterinarian or call 1-888-843-2956.

DIRECTIONS FOR USE
It is a violation of Federal law to use this product in a manner inconsistent with its labeling. Do not allow children to apply product.
READ ENTIRE LABEL BEFORE EACH USE.
USE ONLY ON DOGS OR ON PUPPIES 8 WEEKS OF AGE OR OLDER.
THIS PRODUCT CAN BE USED ON DOGS AND PUPPIES 8 WEEKS OR OLDER, INCLUDING BREEDING, PREGNANT AND LACTATING BITCHES.
1. Remove one applicator tube from the package and hold in an upright position pointed away from your face.
2. Twist dispensing tip clockwise about 1/2 turn while pushing down to break the tube's seal. Do not remove the dispensing tip.
3. Position the dispensing tip on the dog's back between the shoulder blades. Use the dispensing tip of the tube to part the dog's hair so that the product will be applied at skin level. Begin squeezing out the contents of the tube to form a stripe as you move from the shoulder blades along the dog's back to the base of the tail.
4. Repeat every month.



FIRST AID
Have the product container or label with you when calling a poison control center or doctor, or going for treatment. For additional information on this pesticide product (including health concerns, medical emergencies or pesticide incidents) you may call 1-888-843-2956 twenty-four (24) hours per day, seven (7) days per week.
IF SWALLOWED: Call a poison control center or doctor immediately for treatment advice. Have person sip a glass of water if able to swallow. Do not induce vomiting unless told to do so by a poison control center or doctor. Do not give anything by mouth to an unconscious person.
IF IN EYES: Hold eye open and rinse slowly and gently with water for 15-20 minutes. Remove contact lenses, if present, after the first 5 minutes, then continue rinsing eye. Call a poison control center or doctor for treatment advice.
IF ON SKIN OR CLOTHING: Take off contaminated clothing. Rinse skin immediately with plenty of water for 15-20 minutes. Call a poison control center or doctor for treatment advice.

COMBUSTIBLE: Do not use or store near heat or open flame.
HAZARDS TO HUMANS, CAUTION.
Harmful if swallowed. Causes eye irritation. Avoid contact with skin, eyes or clothing. Wash hands thoroughly with soap and water after handling and before eating, drinking, chewing gum, using tobacco or using the toilet.
HAZARDS TO DOMESTIC ANIMALS.
For external use only. Do not use on puppies under 8 weeks of age. Sensitivities may occur after using ANY pest control product for pets. If signs of sensitivity occur bathe your pet with mild soap and rinse with large amounts of water. If signs continue, consult a veterinarian immediately. Pets may experience some temporary irritation at the site of product application. Consult a veterinarian before using this product on debilitated, aged, pregnant or nursing animals. Call 1-888-843-2956 for 24-hour assistance.
PHYSICAL OR CHEMICAL HAZARDS
PRECAUTIONARY STATEMENTS
For use ONLY on DOGS and Puppies
8 weeks and older Weighing: 23 to 44 lbs.

DOCTORS
FOSTER AND SMITH
FIPROTROL PLUS FOR DOGS

For use ONLY on DOGS and Puppies
8 weeks and older Weighing: 23 to 44 lbs.

DOCTORS
FOSTER AND SMITH[®]
FIPROTROL PLUS
FOR DOGS



Weighing:
Contains 3 tubes each:
Lot Code:

EPA Reg. No. 2596-165-91019
EPA Est. No. 2596-OH-1



ACTIVE INGREDIENTS:

Fipronil	9.80%
(S)-Methoprene	8.80%

OTHER INGREDIENTS	81.40%
TOTAL	100.00%

KEEP OUT OF REACH OF CHILDREN
CAUTION

Read accompanying label before use



RM114222

RM114604

EPA Est. No. 2596-OH-1

EPA Reg. No. 2596-165-91019

label before use

Read accompanying

Caution

Children

Keep Out of Reach of

DOCTORS

FOSTER^{AND}SMITHTM

FIPROTROL PLUS
FOR DOGS

Only for use on DOGS AND
PUPPIES 8 WEEKS OR OLDER

23 to 44 lbs.

0.045 fl. oz. (1.34 ml.)

Active Ingredients:

Fipronil 9.8%

(S)-Methoprene 8.8%

DOCTORS
FOSTER AND SMITH | 3 MONTH
SUPPLY

FIPROTROL PLUS™

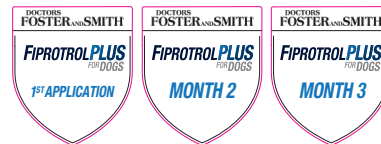
CONTAINS FIPRONIL AND (S)-METHOPRENE

FOR DOGS



REMINDER STICKERS

The first time you treat your dog, place the First Application Sticker on your calendar. Apply Stickers 2, 3 to the calendar 30, and 60 days after the first application to remind you it's time to reapply FIPROTROL PLUS for Dogs.



Manufactured for: CAP Supply, Inc.,
303 Perimeter Center North, Suite 300
Atlanta, GA 30346

For Customer Service please call: 1-888-846-4231



DOCTORS FOSTER AND SMITH
FIPROTROL PLUS FOR DOGS

For use ONLY on DOGS and Puppies 8 weeks and older Weighing:
45 to 88 lbs.



DOCTORS FOSTER AND SMITH
FIPROTROL PLUS FOR DOGS

CONTAINS FIPRONIL AND (S)-METHOPRENE, THE ACTIVE INGREDIENTS USED IN FRONTLINE PLUS®

DOCTORS FOSTER AND SMITH® FIPROTROL PLUS for Dogs is not manufactured by or distributed by Merial. FRONTLINE PLUS® is a registered trademark of Merial Limited.

For use ONLY on DOGS and Puppies 8 weeks and older Weighing:

45 to 88 lbs.

KILLS FLEAS, TICKS, FLEA EGGS, FLEA LARVAE, CHEWING LICE

Kills all stages of Deer Ticks that may carry Lyme disease. Aids in Control of sarcoptic mange infestations.

● **FAST ACTING** ● **LONG LASTING** ● **WATERPROOF**

ACTIVE INGREDIENTS:

Fipronil	9.80%
(S)-Methoprene	8.80%
OTHER INGREDIENTS	81.40%
TOTAL	100.00%

KEEP OUT OF REACH OF CHILDREN CAUTION:

See back panel for additional precautionary statements.

Net Contents: 0.273 fl. oz. (8.04 ml),
Contains 3 tubes,
each 0.091 fl. oz. (2.68 ml.)



DO NOT USE ON CATS

DOCTORS FOSTER AND SMITH
FIPROTROL PLUS FOR DOGS
For use ONLY on DOGS and Puppies 8 weeks and older Weighing:
45 to 88 lbs.

DOCTORS FOSTER AND SMITH
FIPROTROL PLUS FOR DOGS
For use ONLY on DOGS and Puppies 8 weeks and older Weighing:
45 to 88 lbs.



DO NOT USE ON CATS



Manufactured for: CAP Supply, Inc.
300 Perimeter Center North, Suite 300, Atlanta, GA 30346
EPA Reg. No. 2596-165-91019 EPA Est. No. 2596-0H-1

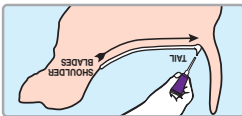
STORAGE AND DISPOSAL
Do not contaminate water, food or feed by storage and disposal.
PESTICIDE STORAGE: Keep this product in its tightly closed original container, when not in use. Store in a cool, dry (preferably locked) area that is inaccessible to children and animals.
PESTICIDE DISPOSAL: Wastes resulting from the use of this product may be disposed of on site or at an approved waste disposal facility.

CONTAINER DISPOSAL: Non-refillable container. Do not reuse or refill this container. If empty: Offer for recycling, if available; if partly filled: Call your local solid waste agency for disposal instructions. Never place unused product down any indoor or outdoor drain.

SIDE EFFECTS
Monitor your dog after application. Side effects may include signs of skin irritation such as redness, scratching, or other signs of discomfort. Gastrointestinal signs such as vomiting or diarrhea have also been reported. If these or other side effects occur, consult your veterinarian or call 1-888-843-2956.

DIRECTIONS FOR USE
It is a violation of Federal law to use this product in a manner inconsistent with its labeling. Do not allow children to apply product.
USE ONLY ON DOGS OR ON PUPPIES 8 WEEKS OF AGE OR OLDER.
THIS PRODUCT CAN BE USED ON DOGS AND PUPPIES 8 WEEKS OR OLDER, INCLUDING BREEDING, PREGNANT AND LACTATING BITCHES.

1. Remove one applicator tube from the package and hold in an upright position pointed away from your face.
2. Twist dispensing tip clockwise about 1/2 turn while pushing down to break the tube's seal. Do not remove the dispensing tip.
3. Position the dispensing tip on the dog's back between the shoulder blades. Use the dispensing tip of the tube to part the dog's hair so that the product will be applied at skin level. Begin squeezing out the contents of the tube to form a stripe as you move from the shoulder blades along the dog's back to the base of the tail.
4. Repeat every month.



FIRST AID
Have the product container or label with you when calling a poison control center or doctor, or going for treatment. For additional information on this pesticide product (including health concerns, medical emergencies or pesticide incidents) you may call 1-888-843-2956 twenty-four (24) hours per day, seven (7) days per week.

IF SWALLOWED: Call a poison control center or doctor immediately for treatment advice. Have person sip a glass of water if able to swallow. Do not induce vomiting unless told to do so by a poison control center or doctor. Do not give anything by mouth to an unconscious person. **IF IN EYES:** Hold eye open and rinse slowly and gently with water for 15-20 minutes. Remove contact lenses, if present, after the first 5 minutes, then continue rinsing eye. Call a poison control center or doctor for treatment advice. **IF ON SKIN OR CLOTHING:** Take off contaminated clothing. Rinse skin immediately with plenty of water for 15-20 minutes. Call a poison control center or doctor for treatment advice. **DO NOT USE ON RABBITS, CATS, KITTENS, OR OTHER ANIMALS.**

COMBUSTIBLE: Do not use or store near heat or open flame. **PHYSICAL OR CHEMICAL HAZARDS**
1-888-843-2956 for 24-hour assistance.

HAZARDS TO DOMESTIC ANIMALS.
For external use only. Do not use on puppies under 8 weeks of age. Sensitivities may occur after using ANY pesticide product for pets. If signs of sensitivity occur, bathe your pet with mild soap and rinse with large amounts of water. If signs continue, consult a veterinarian immediately. Pets may experience some temporary irritation at the site of product application. Consult a veterinarian before using this product on debilitated, aged, pregnant or nursing animals. Call 1-888-843-2956 for 24-hour assistance.

HAZARDS TO HUMANS, CAUTION.
Harmful if swallowed. Causes eye irritation. Avoid contact with skin, eyes or clothing. Wash hands thoroughly with soap and water after handling and before eating, drinking, chewing gum, using tobacco or using the toilet.

PRECAUTIONARY STATEMENTS
For use ONLY on DOGS and Puppies 8 weeks and older Weighing: 45 to 88 lbs.

DOCTORS FOSTER AND SMITH
FIPROTROL PLUS FOR DOGS

DOCTORS
FOSTER AND SMITH[®]
FIPROTROL PLUS
FOR DOGS



Weighing:
Contains 3 tubes each:
Lot Code:

EPA Reg. No. 2596-165-91019
EPA Est. No. 2596-OH-1



ACTIVE INGREDIENTS:

Fipronil	9.80%
(S)-Methoprene	8.80%

OTHER INGREDIENTS	81.40%
TOTAL	100.00%

KEEP OUT OF REACH OF CHILDREN
CAUTION

Read accompanying label before use



RM114222

RM114592

EPA Reg. No. 2596-165-91019
EPA Est. No. 2596-OH-1

**Read accompanying
label before use**

Caution

**Keep Out of Reach of
Children**

DOCTORS
FOSTER^{AND}SMITHTM
FIPROTROL PLUS
FOR DOGS

Only for use on DOGS AND
PUPPIES 8 WEEKS OR OLDER

45 – 88 lbs.

0.091 fl. oz. (2.68 ml.)

Active Ingredients:

Fipronil 9.8%

(S)-Methoprene 8.8%

DOCTORS
FOSTER AND SMITH | 3 MONTH
SUPPLY

FIPROTROL PLUS™

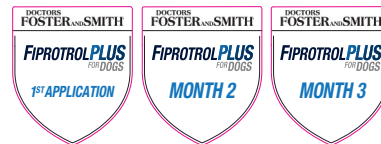
CONTAINS FIPRONIL AND (S)-METHOPRENE

FOR DOGS



REMINDER STICKERS

The first time you treat your dog, place the First Application Sticker on your calendar. Apply Stickers 2, 3 to the calendar 30, and 60 days after the first application to remind you it's time to reapply FIPROTROL PLUS for Dogs.



Manufactured for: CAP Supply, Inc.,
303 Perimeter Center North, Suite 300
Atlanta, GA 30346

For Customer Service please call: 1-888-846-4231



DOCTORS
FOSTER AND SMITH
FIPROTROL PLUS FOR DOGS

For use ONLY on DOGS and Puppies 8 weeks and older Weighing:
89 to 132 lbs.



DOCTORS
FOSTER AND SMITH
FIPROTROL PLUS
FOR DOGS

**CONTAINS FIPRONIL
AND (S)-METHOPRENE,
THE ACTIVE INGREDIENTS
USED IN FRONTLINE PLUS®**

DOCTORS FOSTER AND SMITH® FIPROTROL™ PLUS for Dogs is not manufactured by or distributed by Merial. FRONTLINE PLUS® is a registered trademark of Merial Limited.

For use ONLY on
DOGS and Puppies
8 weeks
and older Weighing:

89 to 132 lbs.

KILLS FLEAS, TICKS, FLEA EGGS, FLEA LARVAE, CHEWING LICE

Kills all stages of Deer Ticks that may carry Lyme disease. Aids in Control of sarcoptic mange infestations.

● **FAST ACTING** ● **LONG LASTING** ● **WATERPROOF**

ACTIVE INGREDIENTS:
Fipronil 9.80%
(S)-Methoprene 8.80%
OTHER INGREDIENTS 81.40%
TOTAL 100.00%

**KEEP OUT OF REACH OF CHILDREN
CAUTION:**

See back panel for additional precautionary statements.

Net Contents: 0.408 fl. oz. (12.06 ml),
Contains 3 tubes, each 0.136 fl. oz. (4.02 ml).



DOCTORS
FOSTER AND SMITH
FIPROTROL PLUS FOR DOGS

For use ONLY on DOGS and Puppies
8 weeks and older Weighing:
89 to 132 lbs.

DOCTORS
FOSTER AND SMITH
FIPROTROL PLUS FOR DOGS

For use ONLY on DOGS and Puppies
8 weeks and older Weighing:
89 to 132 lbs.



RM114596 8 25141 82457 1

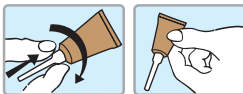
**DO NOT
USE ON
CATS**



STORAGE AND DISPOSAL
Do not contaminate water, food or feed by storage and disposal.
PESTICIDE STORAGE: Keep this product in its tightly closed original container, when not in use. Store in a cool, dry (preferably locked) area that is inaccessible to children and animals.
PESTICIDE DISPOSAL: Wastes resulting from the use of this product may be disposed of on site or at an approved waste disposal facility.
CONTAINER DISPOSAL: Non-refillable container. Do not reuse or refill this container. If empty: Offer for recycling, if available. If partly filled: Call your local solid waste agency for disposal instructions. Never place unused product down any indoor or outdoor drain.
Manufactured for: CAP Supply, Inc.,
303 Perimeter Center North, Suite 300, Atlanta, GA 30346
EPA Reg. No. 2596-165-91019 EPA Est. No. 2596-OH-1

SIDE EFFECTS
Monitor your dog after application. Side effects may include signs of skin irritation such as redness, scratching, or other signs of discomfort. Gastrointestinal signs such as vomiting or diarrhea have also been reported. If these or other side effects occur, consult your veterinarian or call 1-888-843-2956.

DIRECTIONS FOR USE
It is a violation of Federal law to use this product in a manner inconsistent with its labeling. Do not allow children to apply product.
READ ENTIRE LABEL BEFORE EACH USE.
USE ONLY ON DOGS OR ON PUPPIES 8 WEEKS OF AGE OR OLDER.
THIS PRODUCT CAN BE USED ON DOGS AND PUPPIES 8 WEEKS OR OLDER, INCLUDING BREEDING, PREGNANT AND LACTATING BITCHES.



1. Remove one applicator tube from the package and hold in an upright position pointed away from your face.
2. Twist dispensing tip clockwise about 1/2 turn while pushing down to break the tube's seal. Do not remove the dispensing tip.
3. Position the dispensing tip on the dog's back between the shoulder blades. Use the dispensing tip of the tube to part the dog's hair so that the product will be applied at skin level. Begin squeezing out the contents of the tube to form a stripe as you move from the shoulder blades along the dog's back to the base of the tail.
4. Repeat every month.

FIRST AID
Have the product container or label with you when calling a poison control center or going for treatment. For additional information on this pesticide product (including health concerns, medical emergencies or pesticide incidents) you may call 1-888-843-2956 twenty-four (24) hours per day, seven (7) days per week.
IF SWALLOWED: Call a poison control center or doctor immediately for treatment advice. Have person sip a glass of water if able to swallow. Do not induce vomiting unless told to do so by a poison control center or doctor. Do not give anything by mouth to an unconscious person.
IF IN EYES: Hold eye open and rinse slowly and gently with water for 15-20 minutes. Remove contact lenses, if present, after the first 5 minutes, then continue rinsing eye. Call a poison control center or doctor for treatment advice.
IF ON SKIN OR CLOTHING: Take off contaminated clothing. Rinse skin immediately with plenty of water for 15-20 minutes. Call a poison control center or doctor for treatment advice.

COMBUSTIBLE: Do not use or store near heat or open flame.
PHYSICAL OR CHEMICAL HAZARDS
1-888-843-2956 for 24-hour assistance.
Do not use on pregnant or nursing animals. Call a veterinarian immediately. Pets may experience some temporary irritation at the site of product application. Consult a veterinarian if signs continue, consult a veterinarian immediately. Pets may experience some occur bathe your pet with mild soap and rinse with large amounts of water. It may occur after using ANY pesticide product for pets. If signs of sensitivity For external use only. Do not use on puppies under 8 weeks of age. Sensitivities eating, drinking, chewing gum, using tobacco or using the toilet.
HAZARDS TO DOMESTIC ANIMALS.
Harmful if swallowed. Causes eye irritation. Avoid contact with skin, eyes or clothing. Wash hands thoroughly with soap and water after handling and before

HAZARDS TO HUMANS, CAUTION.
PRECAUTIONARY STATEMENTS
For use ONLY on DOGS and Puppies
8 weeks and older Weighing: 89 to 132 lbs.
FIPROTROL PLUS FOR DOGS

DOCTORS
FOSTER AND SMITH[®]
FIPROTROL PLUS
FOR DOGS



Weighing:
Contains 3 tubes each:
Lot Code:

EPA Reg. No. 2596-165-91019
EPA Est. No. 2596-OH-1



ACTIVE INGREDIENTS:

Fipronil	9.80%
(S)-Methoprene	8.80%

OTHER INGREDIENTS	81.40%
TOTAL	100.00%

KEEP OUT OF REACH OF CHILDREN
CAUTION

Read accompanying label before use



RM114222

RM114595

EPA Reg. No. 2596-165-91019
EPA Est. No. 2596-OH-1

Read accompanying
label before use

Caution

Keep Out of Reach of
Children

DOCTORS
FOSTER AND SMITH™
FIPROTROL PLUS
FOR DOGS

Only for use on DOGS AND
PUPPIES 8 WEEKS OR OLDER

89 – 132 lbs.

0.136 fl. oz. (4.02 ml.)

Active Ingredients:

Fipronil 9.8%

(S)-Methoprene 8.8%

DOCTORS
FOSTER AND SMITH | 3 MONTH
SUPPLY

FIPROTROL PLUS™

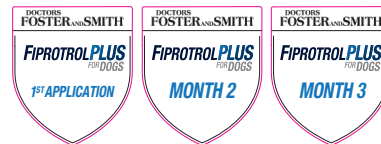
CONTAINS FIPRONIL AND (S)-METHOPRENE

FOR DOGS



REMINDER STICKERS

The first time you treat your dog, place the First Application Sticker on your calendar. Apply Stickers 2, 3 to the calendar 30, and 60 days after the first application to remind you it's time to reapply FIPROTROL PLUS for Dogs.



Manufactured for: CAP Supply, Inc.,
303 Perimeter Center North, Suite 300
Atlanta, GA 30346

For Customer Service please call: 1-888-846-4231

